

NEWS

MARCH 2010 EDITION 1

Welcome

Welcome to our first newsletter on the next big energy saving initiative in the home! The new VPhase unit brings voltage optimisation within the reach of the domestic and small commercial market sectors. The resulting savings in money, energy and carbon emissions are now available to all! Trials have demonstrated annual household electricity cost reductions of £80 or more.

We will be keeping you updated on all the news surrounding this amazing new product over the coming months and showing how you can add value to all your electrical installations in these applications.



Voltage Optimisation Now Available For The Home

For years now many commercial and industrial premises have seen significant reductions in electricity costs thanks to voltage optimisation. In the UK incoming voltages are typically in the range of 240V to 245V for historic reasons. However, many appliances will operate more efficiently and consume less energy at lower voltages.

Voltage Optimisation is now set to be the next major home energy saving initiative with the introduction of VPhase, a cost effective voltage optimisation unit for homes and small businesses. For the first time you can now create ongoing energy cost savings for the homeowner without them changing their electricity supplier or making any lifestyle changes. You can also add value to each installation the next time you fit a consumer unit by also fitting a VPhase alongside.

50 Homes Across Berkshire Fitted With VPhase

Southern Electric has commenced UK trials of voltage optimisation into households. The three month trial will see the new voltage optimisation device from VPhase plc installed into approximately 50 Southern Electric customer homes across Berkshire, under the UK Government's Carbon Emissions Reduction Target (CERT) scheme.

Findings will not only indicate the reduction of electricity usage but will also determine the level of lifetime carbon dioxide savings that can be claimed by utility companies from the installation of VPhase units.

The low-cost smart technology from VPhase uses voltage optimisation technology to reduce the incoming voltage and manage it to a stable level, normally 220V in the UK. The result is considerable reductions to electricity costs, energy wasting and carbon emissions from generation sources. It can be easily fitted by a qualified electrician and will save energy across a wide range of appliances throughout the home. Once installed it requires no maintenance. It's simply a matter of fit, forget and save money instantly.

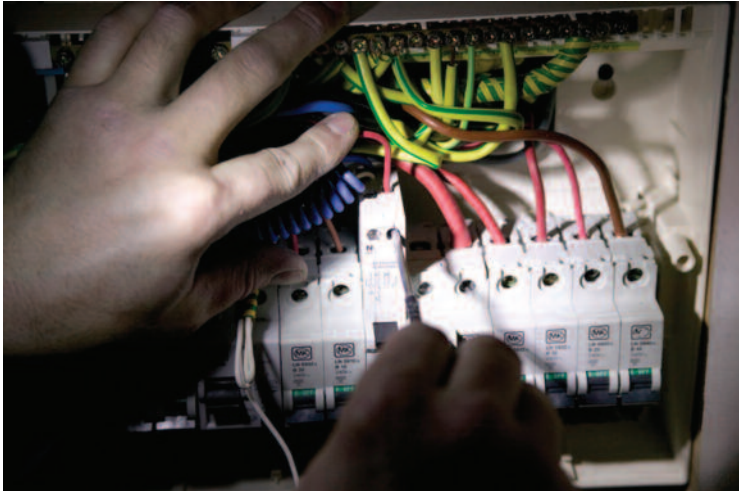
VPhase In Social Housing

VPhase has teamed up with Great Places, one of the North West's leading providers of social housing, to demonstrate the benefits that voltage optimisation can bring to the home. The trial will see the new low-cost VPhase unit installed in a number of tenants' homes to monitor its ease of installation as well as independently measure its energy and carbon saving capability. Tenants involved in the trial will be able to benefit from the immediate and significant money and energy savings the product delivers, without compromising their quality of living.

VPhase CEO, Dr. Lee Juby comments: "We are already working with a number of major UK utilities to introduce VPhase units into homes nationwide. However, with an estimated 4 million homes in England, the social housing market is an extremely important sector for us. Not only will the VPhase unit help social housing providers meet stringent carbon reduction targets, it will also help social housing become even more affordable by reducing emissions and energy bills."

FREE VPhase Installation Training

We are holding free VPhase installation training seminars up and down the UK. Each seminar lasts just a couple of hours and all attendees can then register with us as someone trained to carry out a VPhase installation. If you are interested in attending one of the two hour sessions at a location near you just contact us at info@vphase.com or by calling 0845 003 8095.



Fitting a New Consumer Unit? FIT A VPHASE ALONGSIDE

The most cost effective time to install a VPhase unit is when you're fitting a new consumer unit. There are even consumer units now on the market that are configured specifically to facilitate even easier and quicker wiring of VPhase. This is a great opportunity to increase the value of your installation. Your customer will start saving money instantly and with very attractive payback periods this is an energy saving measure many will find hard to ignore!



Come & See Us at ELEX

We will be exhibiting our voltage optimisation device throughout the year at the following shows

ELEX 2010, Harrogate	11th-12th Mar
ELEX 2010, Exeter	29th-30th Apr
ELEX 2010, Coventry	16th-17th Sep
ELEX 2010, Sandown	30th Nov-1st Dec

To register visit www.elexshow.info



Case Study 1

Mr & Mrs S
4 bedroom detached house
Family of 5
Gas central heating, gas hob and twin electric ovens
Typical voltage reduction of 7.1%
VPHASE SAVES £82 per annum



VPHASE NOW AVAILABLE

You can purchase VPhase units from your local distributor or by calling 0845 003 8235 now.

www.vphase.com